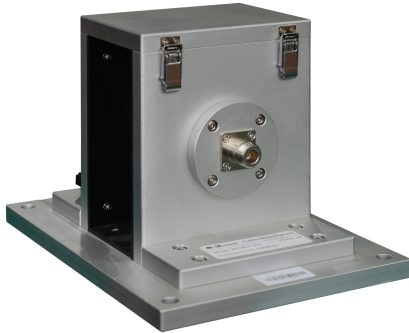


Calibration Fixture for Wide-band Current Monitor Clamp

WCMCF 500

Datasheet



In Compliance with

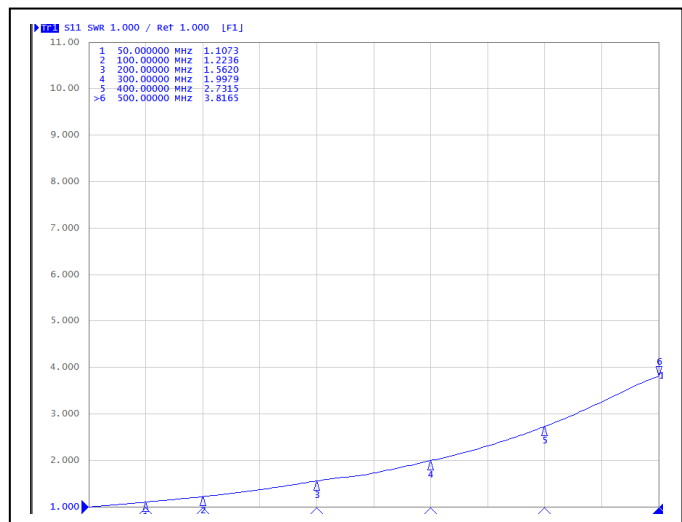
- > GJB 151A-97
- > GJB 151B-2013
- > MIL-STD-461E/F/G

Introduction

The WCMCF 500 is the calibration fixture for wide-band current monitor clamp or current injection clamp. It is a kind of wide-band signal transmission/coupling device with features of small voltage standing wave ratio and no waveform distortion. The device can be quickly disassembled, especially suitable for calibration of closed/annular probe, which meet the test requirement of CS114, CS115 and CS116 specified in MIL-STD-461E/F/G, GJB 151A-97 and GJB 151B-2013.

Specification

Frequency	DC ~ 500 MHz
Characteristic Impedance	50 Ω
VSWR	≤4
Inner Diameter	40 mm
Inner Length	64 mm
Inner Width	127 mm
Inner Height	132 mm
Weight	4 kg



Voltage Standing Wave Ratio Curve of WCMCF 500



SUZHOU 3CTEST ELECTRONIC CO., LTD.

Add.: No. 99 E'meishan Road, SND, Suzhou, Jiangsu Province, China

Tel: +86 (0)512 6807 7192 Fax: +86-512-68079795

Sales Email: globalsales@3ctest.cn Service Email: service@3ctest.cn

www.3c-test.com