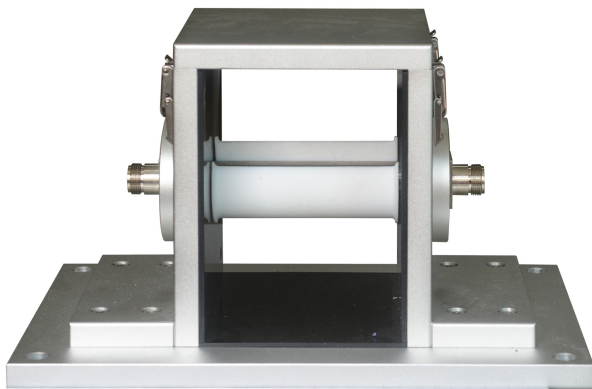


Current Injection Clamp Calibration Fixture

BCICF-400

Datasheet



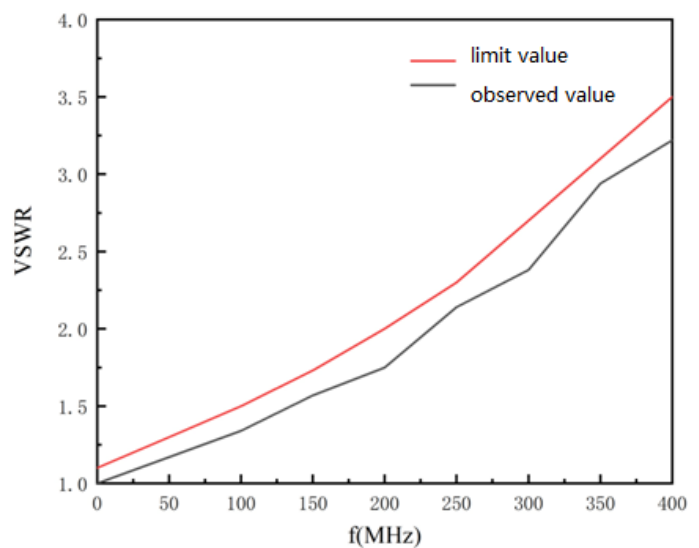
In Compliance with

- > MIL-STD-461E/F/G (CS114, CS115, CS116)
- > GJB 151A-97
- > GJB 151B-2013

Introduction

BCICF-400 is used for the calibration of current injection clamps. current injection clamps are widely used to transmit time-harmonic signal current or pulse signal current to EUT through magnetic coupling, and has the characteristics of distortion-free waveform and physical isolation from EUT, meeting the requirements of MIL-STD-461E /F/G (CS114, CS115, CS116), ISO 7637-3:2007/2016 and other standard current injection requirements.

General Parameters	
Frequency	DC 400 MHz
Typical Impedance	50 Ω
Voltage Standing Wave Ratio	≅ 3.5
Internal Diameter	100 mm
External Diameter	128 mm
Height	135 mm
Weight	4.4 kg



Current coupling clamp calibration fixture voltage standing wave ratio curve



SUZHOU 3CTEST ELECTRONIC CO., LTD.

Add.: No. 99 E'meishan Road, SND, Suzhou, Jiangsu Province, China

Tel: +86 (0)512 6807 7192 Fax: +86-512-68079795

Sales Email: globalsales@3ctest.cn Service Email: service@3ctest.cn

www.3c-test.com