

High Voltage LISN TANHV Series



In Compliance with

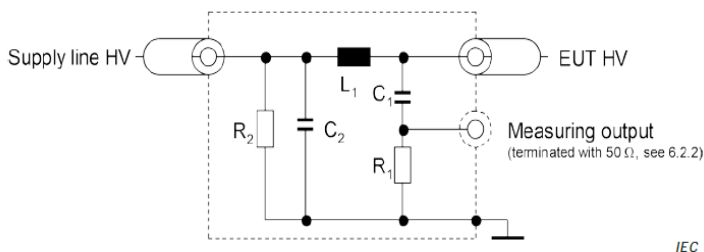
- > CISPR 25
- > ISO 7637-4

Introduction

The high voltage lisen TANHV series are used for isolating components and power source in test as per CISPR 25 and ISO 7637-4, also can be used in measuring e-vehicle hv test system's interference characteristics.

The EMI measuring port are type N.

Features



L1: 5 μ H

C2: 0.1 μ F

R2: 1 M Ω

C1: 0.1 μ F

R1: 1 K Ω

Application Areas

- > E-Vehicle

TANHV 050-Technical Parameters	
Test Voltage (Vmax)	300 V 400 Hz
	700 V 50/60 Hz
	1000 V DC
Test Current (Imax)	50 A
Instantaneous Max. Current	80 A
Dimension	220 x 160 x 170 mm
Weight	Approx. 2.2 kg

TANHV 200-Technical Parameters	
Test Voltage (Vmax)	300 V 400 Hz
	700 V 50/60 Hz
	1000 V DC
Test Current (Imax)	200 A
Instantaneous Max. Current	280 A
Dimension	490 mm*200 mm*215 mm
Weight	Approx. 8.5 kg

TANHV 400-Technical Parameters	
Test Voltage (Vmax)	300 V 400 Hz
	700 V 50/60 Hz
	1000 V DC
Test Current (Imax)	250 A
Instantaneous Max. Current	500 A
Dimension	490 mm*200 mm*215 mm
Weight	Approx. 8.5 kg

General Parameters	
Impedance	0.1-150 MHz
Frequency Range	
Impedance	5 μ H 50 Ω
Coupling Capacitor	0.1 μ F
Ambient Temperature	15-35 °C
Relative Humidity	45% - 75%
Atmospheric Pressure	86 kPa – 106 kPa

Accessories
User manual



SUZHOU 3CTEST ELECTRONIC CO., LTD.

Add.: No. 99 E'meishan Road, SND, Suzhou, Jiangsu Province, China

Tel: +86 (0)512 6807 7192 Fax: +86-512-68079795

Sales Email: globalsales@3ctest.cn Service Email: service@3ctest.cn

www.3c-test.com