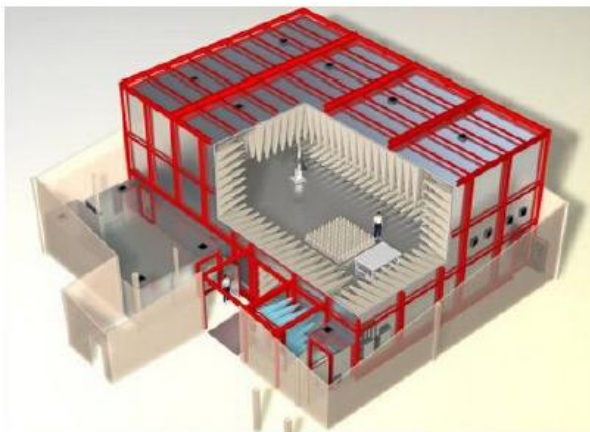


10 Meter Semi Anechoic Chamber-SAC 10

Datasheet



Introduction

The 10 meter anechoic chamber is designed and manufactured completely according to customer requirements. However, based on the initial considerations to size and performance of SAC 10, we have designed seven standard models, whose diameter of the static zone is ranging from 2.0m to 8.0m. Plans for anechoic rooms must be made as early as possible, for example, they are planned with the design of exterior buildings at the same time, and thus the interface between them can be determined in time in order to avoid separate revamping in the future. Typical interfaces include all the supply paths, the necessary space left on the ground for the turntable/vehicle hub, the track tunnel of the two-way sliding door, and the possible joint between the shielding room and the building.

Probable interfaces also include emergency control/alarm systems, such as fire and fire extinguishing systems, which must also be considered. But when wedge absorbers (using membrane technology, fire rating is A2) produced by us is used, it is not necessary to consider the installation of these emergency systems.

Technical Parameters				
Room Type	SAC10-2	SAC10-3	SAC10-4	SAC10-5
Diameters of Quiet Zone	2.0 m	3.0 m	4.0 m	5.0 m
External Dimension (L×W×H)	Please consult with salesperson			
Frequency Range	26 MHz-18 GHz			
Measuring Distance	3 m and 10 m			
Absorbers				
Wall and Ceiling	Long-pyramid absorbers P2200 and P2400			
Floor	Equipped with removable floor absorbers which meet the requirement of immunity test to radiation as per IEC/EN 61000-4-3 and the requirement of field voltage standing wave ratio when the radiation emission test is more than 1GHz.			
In Compliance With Normalized Site Attenuation Maximum Deviation as per CISPR 16-1-4	±3.5 dB			
In Compliance With Maximum Field Voltage Standing Wave Ratio as per CISPR 16-1-4	6 dB			
Radiation Immunity Test	Completely compliant IEC/EN 61000-4-3			
Size of Uniform Field	1.5 m x 1.5 m			
Max. Deviation	75% of 16 measuring points conform to 0 dB/+6 dB			

Standard Configuration

- One sliding door and one single door
- 12~16 honeycomb windows used for ventilating
- One 250 V AC mains filter, 2x16 A
- one 250 V AC mains filter, 4x64 A
- interface panel
- Electrical equipment
- Lightning equipment
- Reflection plane
- Elevated floor
- Absorbers
- One rotary table
- One antenna tower
- One controller of antenna tower and rotary table
- Feed through components: N-type connector, BNC connector, fiber interface

Optional Configuration

- Three-phase mains filter
- Signal and data lines filter
- Video and audio monitoring system
- Calibration for chamber performance
- Measuring devices
- Totally non-combustion type absorbers



SUZHOU 3CTEST ELECTRONIC CO., LTD.

Add.: No. 99 E'meishan Road, SND, Suzhou, Jiangsu Province, China

Tel: +86 (0)512 6807 7192 Fax: +86-512-68079795

Sales Email: globalsales@3ctest.cn Service Email: service@3ctest.cn

www.3c-test.com