



# Common Mode Conduction Anti-interference Coupling Network

## CN 416M2M3-32

### ■ IEC 61000-4-16

#### — Features

- > Suitable for 2-wire or 3-wire common mode simultaneous injection ;
- > Quick short-circuit switch for DC coupling ;
- > Banana head terminal signal injection.

#### — Introduction

The CN 416M2/M3-32 coupling network is suitable for (common mode conducted immunity) 2-wire or 3-wire cables, and its coupled common mode conducted immunity voltage can reach 300V. Design strictly in accordance with the requirements of IEC 61000-4-16:2015 standard.

#### — Application Areas



## Technical Parameters

Standard	IEC 61000-4-16:2015
Coupling Frequency	0 Hz-150 kHz, CW wave
Line Impedance	M2/200 $\Omega$ * 2, M3/300 $\Omega$ * 2
Coupling Voltage	300V
Coupling Mode	2-wire/3-wire common mode (simultaneously to ground)
Coupling Device	1 $\mu$ F capacitor
Working Voltage	Maximum 400V DC
Working Current	Maximum 32A
AE/EUT Port Type	4 mm banana head
Signal Injection Port Type	4 mm banana head

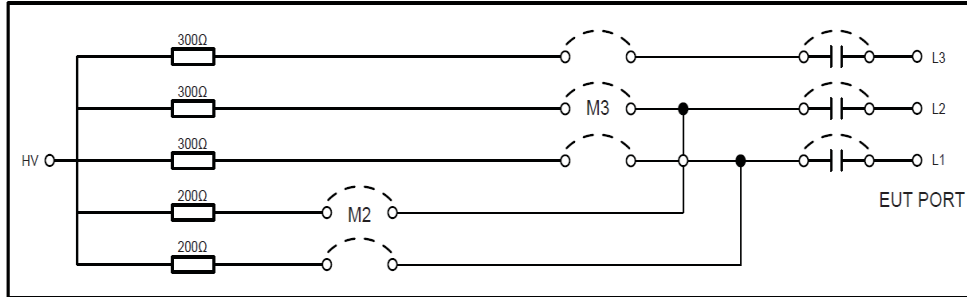
## General Parameters

Weight	Approximately 3.6 kg
Size	360 mm x 220 mm x 135 mm (length x width x height)
Shell Material	Aluminum material
Ambient Temperature	15 ° C -35 ° C
Relative Humidity	45% -75%

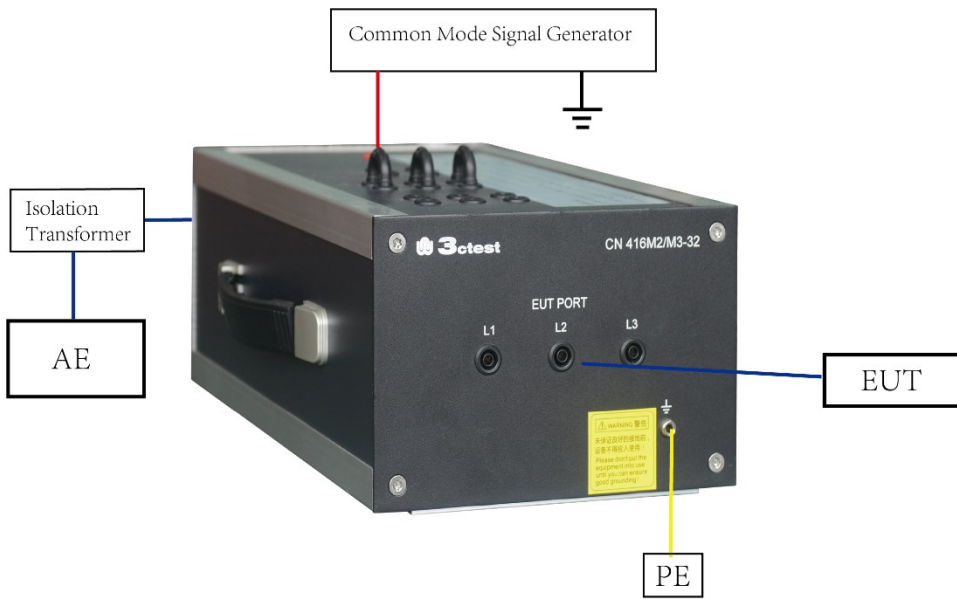
## Standard Accessories

Test line, Plug
-----------------

### 1. Standard Schematic Circuit



### 2. Test Connection Illustration



## SUZHOU3CTEST ELECTRONIC CO., LTD

Address: No. 99 E'meishan Road, SND, Suzhou, Jiangsu Province, China  
Sales Email: [globalsales@3ctest.cn](mailto:globalsales@3ctest.cn) Service Email: [service@3ctest.cn](mailto:service@3ctest.cn)  
Tel: + 86 - 512 - 68077192 Web: [www.3c-test.com](http://www.3c-test.com)

