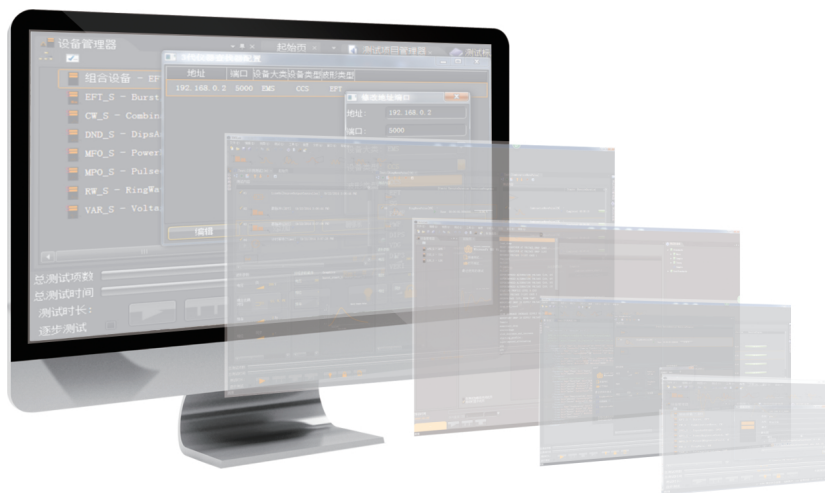


## EMSLab Test Software

## Datasheet



### Introduction

EMSLab is the software of EMS test platform, together with the hardware, the whole test system can be made up to perform EFT/Burst, Surge, Voltage dips, Variation, Power frequency magnetic field and pulsed magnetic test functions. EMSLab referring to relative standards, pre-defined test parameters and test waveforms in the standard library can be offered which make users operate very conveniently with automatic test sequence and remote one-key operation.

### Features

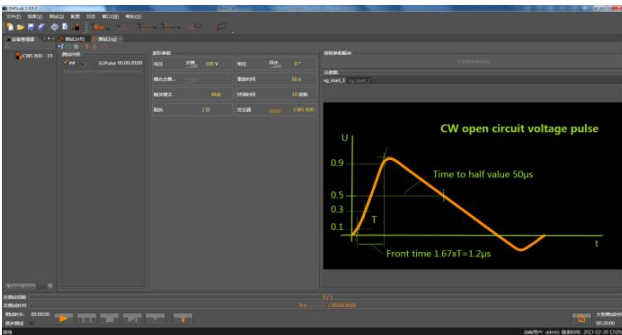
- > Compatible for Windows XP, Windows 7, Windows 8 and Windows 10
- > Ethernet interface
- > Available to control CCS series, EFT series, CWS series, PFS series and MFS series
- > Support IEC 61000-4-11, IEC 61000-4-29, IEC 61000-4-4, IEC 61000-4-5, IEC 61000-4-8, IEC 61000-4-9, IEC 61000-4-34
- > Powerful scheduling and test sequence, one-key remote control
- > Support single test/sequential test report and self-defined test report template
- > Waveform saving, loading and management

### Highlights

- > Multi-window graphical UI
- > Support parameters scheduling, test sequence and one-key test operation
- > Support test report generation and convenient recording real-time data
- > Waveform saving, loading and management
- > Available for standard library and equipments update

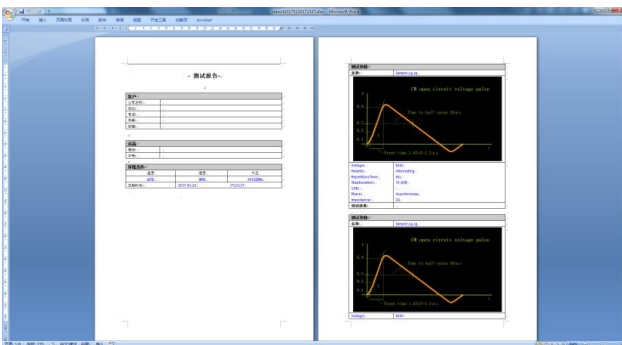
## Descriptions of functions and highlights

- Multi-window graphical UI:



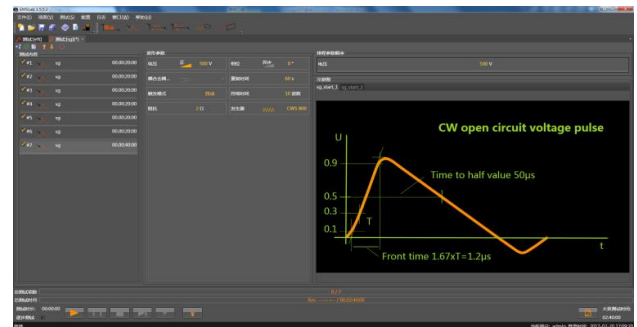
Support to open multiple test editing window at the same time, each window independently set operation, the parameters definition clearly.

- Support the export of test reports, user-friendly record real-time data:



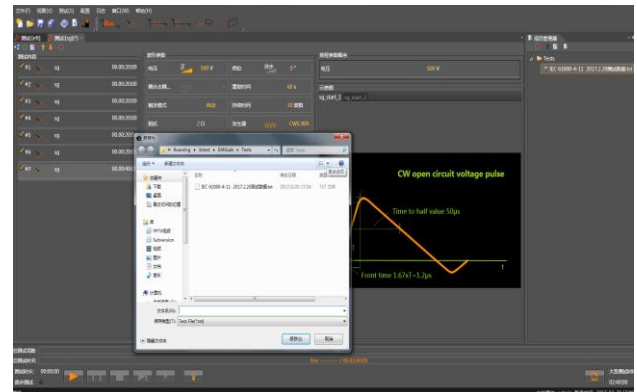
You can set the default report header information or the user can edit the test report template according to their actual business needs, and in accordance with the user manual and examples, after the test, it will automatically generate a report with experimental data, the user can also generate reports at any time to record some information.

- Support parameter scheduling test, test sequence, one-key test, easy to operate:



A test can add more than one sequence of test steps, users can conveniently perform a series of experiments to achieve one-key test, easy to operate. For test parameters, EMSLab also supports scheduling multiple parameters to achieve iterative testing parameters, to avoid frequent setting of parameters.

- Waveform save and load functions, the saved waveform can be managed:



EMSLab can save the waveform of standard library or self-defined programming, and can also load these saved files. EMSLab manages the user-defined programming file, and the user can customize the specified folder name and save the file Name, easy to manage and call test again.

## Applicable Standards

### ■ EMSLab V1.5.0.0 Standard library:

- > IEC 61000-4-11 2002 50HZ
- > IEC 61000-4-4 1995
- > IEC 61000-4-4 2004
- > IEC 61000-4-5 2005 1-Phase Power Lines,L-N
- > IEC 61000-4-5 2005 1-Phase Power Lines,L-PE
- > IEC 61000-4-8 2001
- > IEC 61000-4-9 2001

### ■ EMSLab V1.6.0.0 Standard library:

- > IEC 61000-4-11 2004
- > IEC 61000-4-34 2009

### ■ EMSLab V1.5.1.0 Standard library:

- > IEC 61000-4-11 2002 60HZ
- > IEC 61000-4-29 2000
- > IEC 61000-4-5 2005 3-Phase Power Lines,Lx-Lx
- > IEC 61000-4-5 2005 3-Phase Power Lines,Lx-PE

## Equipments Supported by Software

### ■ EMSLab V0.9 supports:

- > CCS 600

### ■ EMSLab V1.5.4.0 supports:

- > CWS 800/800G

### ■ EMSLab V1.7.0.0 supports:

- > DOS300/DOS300G

### ■ EMSLab V1.7.5.0 supports:

- > PFS 38XX T/ PFS 38XX TV
- > PFS 45XX T/ PFS 45XX TV
- > PFS 69XX T/ PFS 69XX TV

### ■ EMSLab V1.5.0.0 supports:

- > CWS 600G
- > EFT 500X
- > PFS 2216SD / PFS 2216SVD
- > MFS 400 / MFS 1200

### ■ EMSLab V1.6.0.0 supports:

- > PFS 38XXT1 / PFS 38XXT3
- > PFS 45XXT1 / PFS 45XXT3

### ■ EMSLab V1.7.3.0 supports:

- > CWS 600CT

### ■ EMSLab V1.7.3.0 supports:

- > CWS 600T



### **MAINLAND CHINA**

SUZHOU 3CTEST ELECTRONIC CO., LTD.  
Add.: No. 99 Emeishan Rd, SND, Suzhou 215153,  
Tel: +86 (0)512 6807 7192  
Fax: +86-512-68079795  
Email: [globalsales@3ctest.cn](mailto:globalsales@3ctest.cn)  
[www.3c-test.com](http://www.3c-test.com)

### **TAIWAN**

RICHTEC INSTRUMENTS CO., LTD.  
Add.: 6F.-5, No.130, Ln. 235, Baoqiao Rd., Xindian  
Dist., New Taipei City 23145, Taiwan, China  
Tel: +886 2 8912 1185 #10  
Email: [ryan@richtec.com.tw](mailto:ryan@richtec.com.tw)  
[www.richtec.com.tw](http://www.richtec.com.tw)

### **SOUTH KOREA**

TESTEK Co., LTD.  
Add.: 601Ho, SungwoonKoa, 141 Hyeonam-ro,  
Suji-Gu, Yongin-Si, Gyeonggi-Do, South Korea.  
Tel: +82 70 4099 2071,  
E-mail: [woo@testek.co.kr](mailto:woo@testek.co.kr)  
[www.testek.co.kr](http://www.testek.co.kr)

### **SINGAPORE**

QUANTEL PTE LTD.  
Add.: 25 Kallang Ave, #05-02, 339416, Singapore  
Tel: +65 6745 3200  
Email: [engtat.ong@sg.quantel-global.com](mailto:engtat.ong@sg.quantel-global.com)  
[www.quantel-global.com](http://www.quantel-global.com)

### **USA**

THE EMC SHOP  
Add.: 7401 Galilee Rd. #160, Roseville, CA 95678,  
USA  
Tel: +1 844 423 7435  
Email: [brendon.berg@theemcshop.com](mailto:brendon.berg@theemcshop.com)  
[www.theemcshop.com](http://www.theemcshop.com)

### **RUSSIA**

CDIP LLC  
Add.: Room 7, Building 5, House 69, Ryabinovaya  
Street, Moscow 121471, Russia  
Tel: +7 (495) 956 20 22  
Email: [info@cdip.ru](mailto:info@cdip.ru)  
[www.cdip.ru](http://www.cdip.ru)